

Inquiry  Order

Customer number: \_\_\_\_\_

Company stamp / address:

Contact person: \_\_\_\_\_

Telephone: \_\_\_\_\_

Quotation No.: \_\_\_\_\_

Commission: \_\_\_\_\_

Number of systems: \_\_\_\_\_

Opening direction:  inwards folding  outwards folding (Note: Use interior view!)

Dimensions: Width: \_\_\_\_\_ (Total unfolding) Height: \_\_\_\_\_ (incl. possible floor recession)

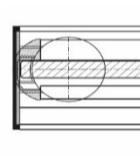
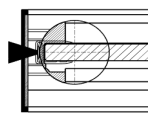
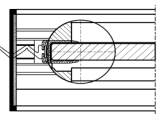
Number of panel: \_\_\_\_\_ to the left \_\_\_\_\_ to the right

Colour:  RAL \_\_\_\_\_  E6-EV1  DB703  DB703 FS  Special colour: \_\_\_\_\_  
 Pre anodizing

Glazing:  10 mm tempered glass, clear with Heat-Soak-Test  12 mm tempered glass, clear with Heat-Soak-Test  Special glass: \_\_\_\_\_

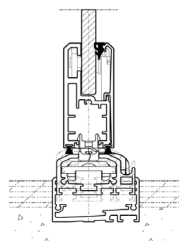
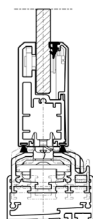
Wall connection left and right:

with rubber gasket  with brush gasket  flush



in EV1 (standard)  
 in RAL \_\_\_\_\_

Bottom track:  standard  embed



in EV1 (standard)  
 in RAL \_\_\_\_\_  
 only possible after agreement

Operation/Handle:  inside  inside and outside

Turning knob (Standard)  Mortise latch lock:  with half profile cylinder  with full profile cylinder

Special colour \_\_\_\_\_ Gap gaskets:  1 pc per panel joint

Latch:  with PZ  without PZ

Flush handle with shoot-bolt lock  with half profile cylinder  with PZ inside + outside

Flush handle with shoot-bolt lock inside + outside  with half profile cylinder  with PZ inside + outside

Handle height: H = \_\_\_\_\_ (Indicate handle height from lower panel edge)

Please enclose floor plan resp. view sketch and remarks (please use inside view)